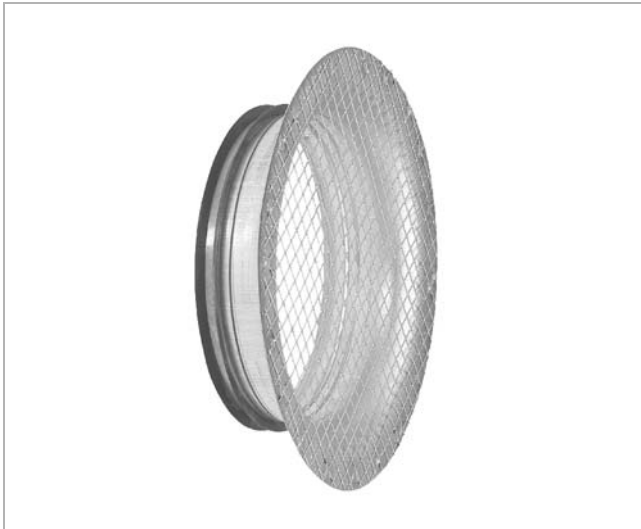
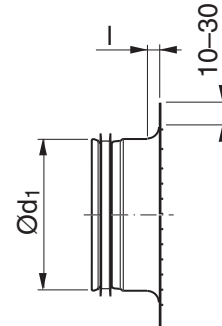


Take-off with mesh

ILRNU



Dimensions



Description

To terminate an inlet duct.

With radius.

Mesh size 10 × 10 mm

| Ød ₁ nom | l mm | m kg |
|------------------------|---------|---------|
| 63 | 10 | 0,07 |
| 80 | 12 | 0,11 |
| 100 | 15 | 0,16 |
| 125 | 20 | 0,21 |
| 140 | 20 | 0,24 |
| 150 | 20 | 0,27 |
| 160 | 25 | 0,22 |
| 180 | 25 | 0,34 |
| 200 | 25 | 0,39 |
| 224 | 25 | 0,51 |
| 250 | 25 | 0,64 |
| 300 | 25 | 0,77 |
| 315 | 25 | 0,83 |
| 355 | 25 | 0,89 |
| 400 | 25 | 1,14 |
| 500 | 25 | 1,61 |
| 630 | 25 | 2,19 |

Ordering example

